

NAE-1 DMPL

1-Door Embedded Access Control Panel

Web-Browser-Based 1-Door Controller No Software to Load Now with Alarm Lock Integration

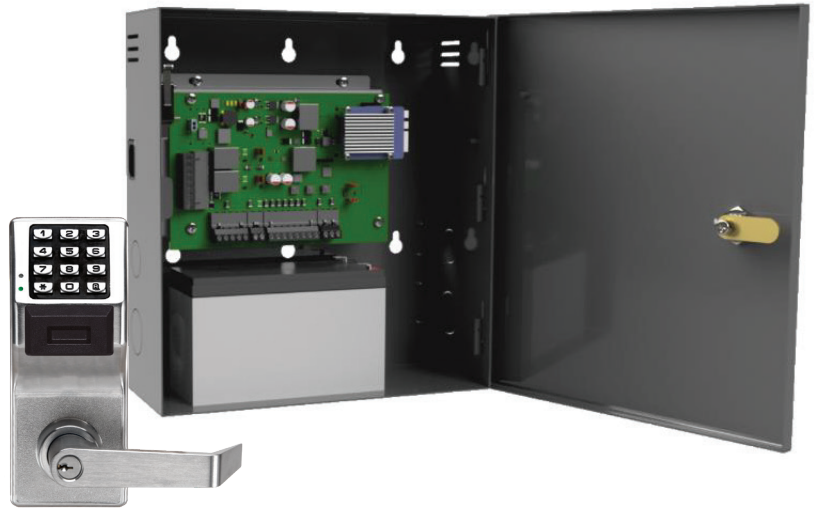
- **E-Access Series:** Faster to Deploy Configure - Simple, Self-Contained & Scalable for a Few To 500 Doors
- Save Time/Cost Web-Browser-Managed. No More Software to Load Or License
- Expandable Linux Embedded Controller, 1-Door
- Management App w/ Integrated Mobile Credential
- Fast System Setup - Configuration Wizard & Database Flat File Import Tool
- **New Alarm Lock Access Lock Integration (#AL-LI 8-Lock Module, Expandable to 64)**
- Secure End-To-End Communications, SSL, AES 256 Bit Encrypted

Capabilities

- "One" Door Panel with integrated power
 - Power for panel, readers, locks and battery
 - All outputs are isolated
 - Lock outputs auto resetting fused
 - **Lock and Auxiliary power is jumper-selectable for "Dry" or "Wet" contacts**
- Battery Charging Disable Option for POE installations
- Functions as a Server, Client or Elevator
- WIFI / BLE option
- Browser managed - No software to load
- 2 Readers (In/Out) / Wiegand - OSDP Ready
- 2 Relays (Lock/Aux) / Wet or Dry Selectable - Global
- 3 Inputs (REX, DPS, Aux) Global
- ETL - UL 294 (Pending)
- 5-year hardware warranty

Power Accessory: POE-1DC

12VDC 2A POE Power Supply - Mounts in housing for system input power



Model	NAE-1 DMPL
Operating System	Embedded Linux
Transactions	>60 per second
Power Requirements	115 VAC, 5' IEC cord included
Operating Temperature	50 to 95 degrees F
Enclosure (H W D)	9.5 x 10.5 x 3.0"
Standby Power Requirements	350mA@12V
Number of Doors	1 Total
Readers (Wiegand)	2 Readers Total, 1 In & 1 Out Reader
Reader Power	300mA @ 12V Max per Reader ; 600mA @ 12V Max per Reader
Request to Exit Inputs	1
Door Position Status Inputs	1
Auxiliary Input	1
Mechanical Tamper	Yes
Power Fault Monitoring	Yes
Door Lock Ouput	1 Form C Relay, 24V @ 2.0A(dry)
(Selectable "Wet" or Dry" Contacts)	Wet outputs 700mA @ 12VDC or 350mA 24 VDC
Auxiliary Ouput	1 Form C Relay, 24V @ 2.0A(dry)
(Selectable "Wet" or Dry" Contacts)	Wet outputs 700mA @ 12VDC or 350mA 24 VDC



Alarm Lock, Division of Napco Security Technologies
345 Bayview Ave, Amityville, NY 11701
1-800-ALA-LOCK | Fax 631-789-9292 | www.alarmlock.com