

Trilogy® Prox T3 PDL3000:

**New On-Trend Matte Black
US19 Finish
Also Available!**

Use the Same ID Cards as Hardwired Access Systems & Install in About an Hour
Save all the downtime & 1/2 the cost of hardwired systems with advanced electronic access PIN/Prox locks



PDL3000

- Provide access for up to 2000 users, with prox ID-cards or 3 to 6 digit codes including: Master, manager, supervisor and basic user. Users are individually programmed to use a card only, code only, or, for the highest security, both card and code.
- Built-in HID Prox reader for entry with HID prox ID cards and keyfob credentials
- Grade 1 BHMA Certified durability and rugged clutch mechanism ensure long dependable life
- Weatherproof performance for indoor and outdoor applications, wide operating temperature range of -31°F to +151°F (-35°C to +66°C)
- Electronic master key system with access customized to each user's hours - Give each user access to common areas and/or their individual area(s) and do so defined by the actual times they are permitted entry there.
- Codes are fingertip programmable -or- downloadable via PC (with Free Windows-based Alarm Lock Trilogy Software) or using optional Data Transfer Module
- ID Cards can be simply added locally by individually tapping them on the lock face -or- added in multiples in batch-enrollment with PC or optional Enroller Module
- Easy to install in about an hour retrofits most cylindrical locksets and cleanly retrofits mechanical digital locks' prep.
- Ideal ID-card access system solution, one door at a time - especially when hardwire access system capacity, timelines or budgets run out.
- 500 scheduled events save manpower. Program events such as automatic locking or unlocking by daily, weekly or holiday schedule, etc. Includes 4 quick schedules for one-step set up of the 4 most common time schedules
- Real time clock allows logging of events to within 1 second accuracy
- Up to 40,000 event audit trail with time/date stamp for a printable record of door access activity by user
- Adjustable entry time allowance from 3-15 seconds
- Greater security with "temporary keypad lockout" after 6 unsuccessful code-entry attempts (adjustable from 1-9 attempts) - Attempts are also logged by time and date
- Programmable relays energize when one or more selected events occur, e.g., in concert with a receptionist buzz-in application or with video cameras
- Long-life battery operated; uses 5 off-the-shelf AA batteries; 60,000 cycles, typical. Audible and visual low-battery alert.
- Standard key override or interchangeable core models accepting 6 or 7 pin cores from Arrow, Best, Falcon or KSP. Other IC core preps available
- Available in standard Trilogy leverset (straight) or with regal (curved) lever
- Three Architectural Finishes, standard: polished brass (US3), satin chrome (US26D), and duronodic (US 10B).



PDL5300

- Double-Sided model has ID Card- Prox Readers on inner & outer door. Ideal for jetways etc.



Ideal for schools, healthcare, pharmacies, rental properties, offices, retail and airports.

Keypad: Weatherproof, all metal, 12-button programmable for multi-level access functions. Proximity antenna housing molded of ultra high strength, impact resistant Lexan®.

HID Proximity Reader: Built-in, weather-sealed HID reader supports virtually all HID cards, fobs, credentials, etc.

Door thickness: 1½" to 1⅞" standard. For 1½" doors use HW567 & HW569 spacers. For other thicknesses, please consult factory.

Backset: 2¾" Standard. 2⅝" backset also available.

Audit trail: Lock's activity log can be extracted by using the AL-DTMIII (data transfer module), the AL-PCI2 (PC interface) and/or can be on-site printed using the AL-IR1 (hand-held infrared printer)

Strike: 1⅞" x 2¾" T strike standard. With screws for wood or metal jambs. 1¼" x 4⅞". ASA strike also included.

Finishes: US3 polished brass, US26D satin chrome, and US10B duronic.

Door prep: Standard ANSI A115 Series Prep, modified by adding additional through-bolt holes.

Compliances: BHMA Certified Grade I, heavy duty cylindrical lockset, UL listed to the 10C Positive Pressure Specification. Latchbolt is UL listed and 3-hour fire rated, FCC certified. ADA compliant levers.

Standard Key Override Cylinder: Solid brass 6 pin tumbler cylinder keyed 5, SCI keyway, furnished in all K.O. models. Tailpieces for Schlage (HW580) & Lori (HW620) cylinders (furnished).

Interchangeable Code Models: Accepts 6 & 7 Pin Cylinders from: Best, Arrow, KSP, Falcon and Kaba Peaks. Also available IC Core models for Yale, Medeco, Corbin/Russwin, Sargent & Schlage (Schlage IC available only with regal (curved) handle). Alarm Lock tailpiece is supplied; IC Core is not included.

Power: 5AA alkaline batteries, supplied. Audible low battery alert, visual and audible entry indicators, 60,000 cycles typical.

Programming: Locking modes, event schedules, group, individual, master, management, passage, emergency service codes. Lockout, remote override capability and allowable entry time (3, 10 or 15 seconds), are programmable through the keypad, AL-DTMIII or Alarm Lock's DL-Windows PC Software.



NEW!
DL2700/19
Matte Black



With IC Core in 26D
DL2700IC/26D



Regal handle option



Lever sets feature clutch mechanism ensuring longer life and complies with ADA specs providing barrier-free access to the disabled.

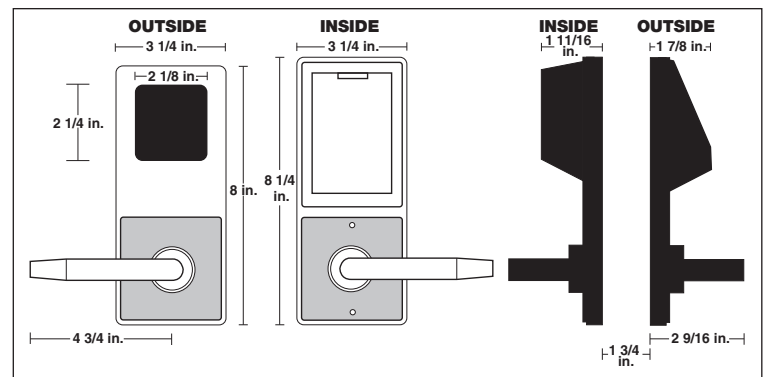
Trilogy is available in many additional models, including those for outdoors, and/or Mortise, exit trim panic devices, plus with Prox ID card reader, dual-sided keypads, wireless lock networks and more.

Other Trilogy Options:

PDL3000 Standard Trilogy PIN/Prox Reader Model w/ Audit Trail & Schedule

PDL3000IC as above, with IC Core Prep

NAPCO
Access
Alarm Lock | Continental | Marks USA.



PDL 30 00 IC /26D -Y

Model & Series:

PDL30 = Trilogy Prox Digital Lock
PL3000 = As above, less keypad

Trim:

00 = Straight Lever
75 = Regal Lever

Cylinder:

IC = Standard Interchangeable Core Prep for Best, Falcon, Arrow, KSP
(Note: No "IC" indicates standard K.O. cylinder.)

Finish:

/26D = US26D Satin Chrome
/3 = US3 Polished Brass
/10B = Duronodic

Special Order IC Prep:

-Y = Yale
-M = Medeco
-R = Sargent
-C = Corbin/Russwin
-S = Schlage (in Regal lever)



DL-WINDOWS Trilogy Software: Free Alarm Lock Trilogy Microsoft Windows-based software application, for programming, entering users, receiving audit trail from lock or used with ALDTMs to transfer data. Version 4.177 or higher, supports Trilogy Networkx, Wireless Keypads, Locks and ArchiTech series, & Trilogy standalone locks, with single database. Downloadable free at <https://alarmlock.com/dl-download/>.

Trilogy Audit Trail and Programming

AL-DTMIII Data Transfer Module: Module used to transfer program data from the PC to the lock and receive Audit Trail from the lock. Can transfer program data for up to 200 locks.



AL-PRE2 Dual Function Reader/Enroller for Smart Cards or Prox IDs: Just tap the Smart Card or Prox ID device to the unit's faceplate to automatically enroll in DL-WINDOWS software database. (9V battery operation.)



PL3000 Prox Reader-Only version
(no keypad/no PINs; even more vandal proof)

PDL5300 Double-Sided, Prox Readers on inner & outer door

Also see full line of Trilogy Networkx® for networked models with global functions, up/downloading over network and/or auto-compiled audit trails, etc. Also ArchiTech Networkx for minimalist look (concealed electronics) plus hundreds of finish & trim options.

Alarm Lock Systems, LLC (A Division of NAPCO Security Technologies, Inc.)

333 Bayview Ave, Amityville, New York 11701

1-800-ALA-LOCK • ++ 631.842.9400 • www.alarmlock.com • salesinfo@alarmlock.com
Trilogy® T3 and LocDown are trademarks of NAPCO. Other trademarks listed are those of their respective companies.
Some preliminary specifications subject to change without prior notice. © NAPCO 2025.10 ALA156C